

Wall Mount Filtration Unit

Features & Benefits

- Ultipleat UR219 Series SRT Filter Housing and Element
- Proprietary laid-over pleat media pack design
- Pall Stress-Resistant Technology (SRT) Media
- Cast iron pump with hardened steel gears & needle roller bearings
- IP55 rated motor
- Internal relief valve
- Wall bracket mount
- Oil sample port
- Filter blockage indicator

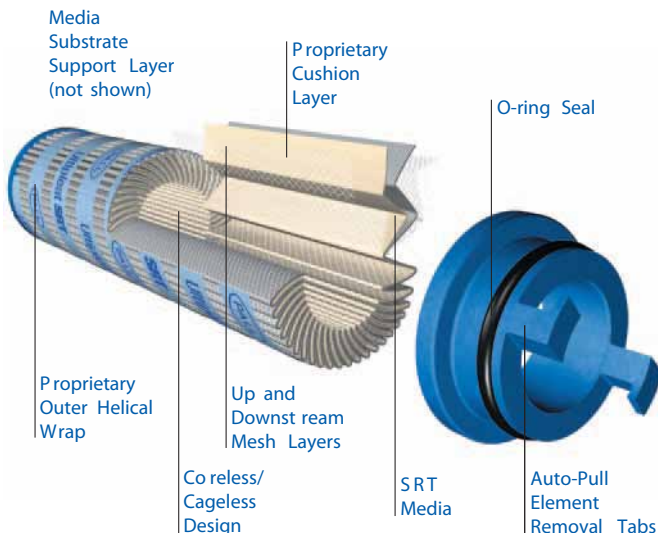
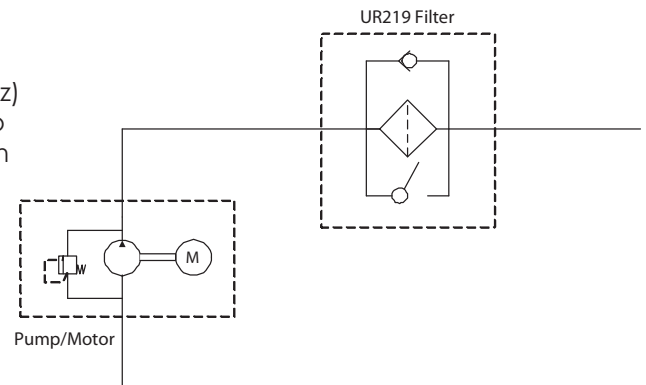
Specifications

Maximum Working Pressure:	41 bar (600 psi)
Temperature Range:	Nitrile seals: -40°C to 120°C (-40°F to 250°F) Fluorocarbon Seals: -29°C to 120°C (-20°F to 250°F)
Inlet Port Size:	1" BSPP
Outlet Port Size:	3/4" BSPP
Maximum Pump Viscosity:	5,000 cSt
Filter Bypass Valve Setting:	3.4 Bar (50 psi)
Pump Relief Valve Setting:	6.9 Bar (100 psi)
Flow Rate:	4 L/min (standard) 5 L/min (460V, 60Hz)
Filter Assembly Materials of Construction:	Aluminium head, tube and cap (also available in carbon steel/cast iron on request).
Dimensions:	375mm(W) x 400mm(H) x 195mm(D)
Weight:	20kg (44lb)



Pall WMU219 Wall Mount Filtration Unit
'H' Head Option Shown

Flow Schematic



Element Pressure Drop

Pressure drop factors are shown with fluid at 32 cSt, 0.9 S.G. Correct for other fluids by multiplying the factor by new viscosity in cSt/32 x new S.G./0.9.

Note: pressure drop factors have been multiplied by 1000. Divide end result by 1000 to provide actual pressure drop at 4 L/min.

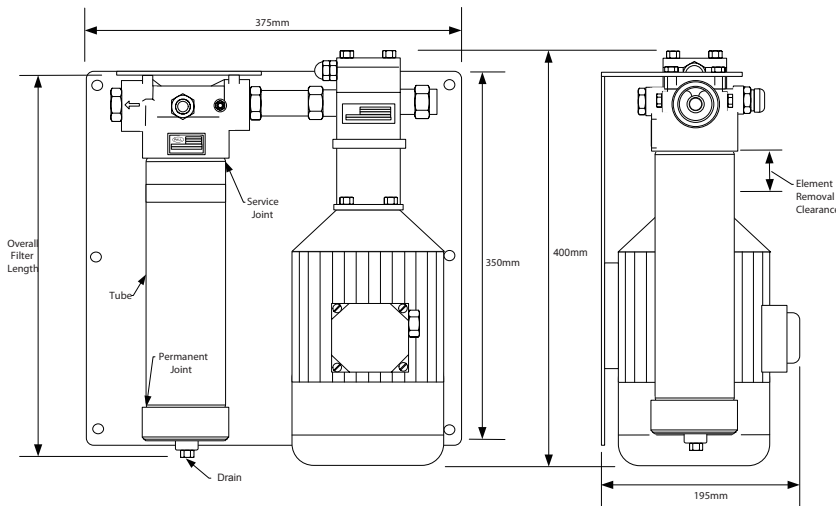
219 Series Filter Elements — 1000 x Pressure Drop (Bar) at 4 L/min

Length Code	AZ	AP	AN	AS	AT
04	80.28	34.04	22.88	14.20	10.76
08	39.72	16.84	11.32	7.04	5.32
13	23.80	10.08	6.80	4.20	3.20
20	15.80	6.72	4.52	2.80	2.12

Wall Mount Filtration Unit

Dimensional Drawings

('H' option housing shown)



Length Code	'C' Option Overall Length mm	'H' Option Overall Length mm	'C' Option Element Removal Clearance mm	'H' Option Element Removal Clearance mm	Empty Weights kg
04	246	260	130	64	2.5
08	348	362	230	64	3.1
13	483	496	370	64	3.6

Ordering Information

Part Number : WMU219 Table 1 Table 2 Table 3 Table 4 Table 5 Table 6 Table 7 Table 8 Table 9

Element P/N: UE 219 Table 2 Table 3 Table 4

Seal Kit P/N: UR 219 SK Table 4

Table 1: Orientation Options

Code	Option
C	Cap service (tube up)
H	Head service (tube down)

Table 3: Length Options

Code	Length (in)*
04	4
08	8
13	13

* Nominal length

Table 2: Filter Element Options

Code	B x(c) ≥1000	CST Rating*
AZ	3	08/04/01
AP	5	12/07/02
AN	7	15/11/04
AS	12	16/13/04
AT	22	17/15/08

* From Cyclic Stabilization Test

Table 4: Seal Options

Code	Seals
H	Nitrile
Z	Fluorocarbon

Table 5: Bypass Valve Options

Code	Valve
A	1.7 bar (25 psid)
B	3.4 bar (50 psid)

Table 6: Differential Pressure Indicator Options*

Code	Indicator	'H' Dim.
P	Visual indicator with thermal lockout	21mm
D	Visual indicator with no thermal lockout	21mm
L	Electrical switch (SPDT) with 6" leads	38mm
M	Electrical switch (SPDT) with DIN43650 connector and matching cap	78mm
S	Electrical switch (SPDT) with 3-pin MS connector	57mm
B	Plug in place of indicator	8mm
9	2 indicator ports with plastic plugs	N/A

* Other indicator options are available; contact Pall.

Table 7: Voltage Options

Code	Voltage
P	240 Vac, Single Phase
T	415 Vac, 3 Phase

Table 8: Frequency Options

Code	Seals
3	50 Hz

Table 9: Filter Assembly Materials of Construction

Code	Material
OMIT	Aluminium head, tube and cover
YR8 5	Cast iron head and cap, carbon steel bowl

Quality • Reliability • Knowledge