

V5W Lubricator

Automatic Continuous



Operation

The V5W Lubricator consists of a motor-driven gear pump, with a controlled bypass valve. (constant volume or constant pressure models) The fully automatic lubricating system is preset to max discharge from the factory. Discharge volume/pressure may be adjusted by turning the bypass valve counter-clockwise to reduce.

Technical Data

	Motor	1/20 hp, NEMA Frame L330, continuous duty		
	Motor Type	60747/60747-1	T.E.N.V.	
		60747-2/60746	T.E.F.C. with protective fan screen	
Single Phase	Voltage	115 VAC		
	Frequency	60/50 Hz		
	Speed	1725/1425 rpm (60/50Hz)		
	Start Amperage	2.3/2.5 amp		
	Run Amperage	0.78/0.67 amp (60/50Hz)		
	Maximum Ambient Temperature	104°F (40°C)		
	Pump Discharge	132cc/min (110cc/min 50 Hz)		
	Pump Inlet filter	125 Micron		



V5W 60747

ATTENTION

Use clean oil only of the type and viscosity recommended by machine manufacturer.

ATTENTION

Replace filter group annually.

Discharge/Pressure Adjustment

The V5W Lubricator is fitted with a flow bypass valve(Constant volume models) or a pressure bypass valve(Constant pressure models). Pressure is limited internally to 130 psi by a relief valve (Constant pressure models limited to 200 psi). See page 5 for details.

System & Limitations

Use Type C control units. Viscosity range is 100 to 10,000 SSU at operating temperature. See Bijur Engineering Manual for system limitations.

How to Order

Name	For Reservoir Capacity	Type**	Relief Valve	Part #
V5W Lubricator* Single Phase	1 gallon	CV	130 psi	60747
		CV	130 psi	60747-2
	5 gallon	CV	130 psi	60747-1
		CP	200 psi	60746

* Reservoirs must be ordered separately. **Constant volume or constant pressure.

When ordering, specify name, motor and p.n., e.g. V5W Lubricator, single phase, Part #60747.

BIJUR DELIMON INTERNATIONAL

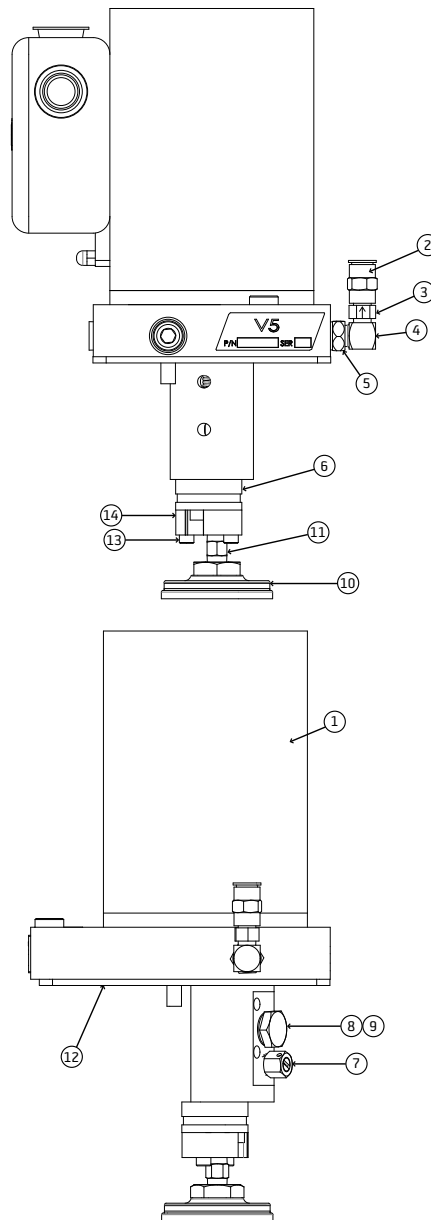
(919) 465 4448 LOCAL
(800) 631 0168 TOLL-FREE
(919) 465 0516 FAX

WWW.BIJURDELIMON.COM

2250 Perimeter Park Dr., Suite 120
Morrisville, NC 27560

Service Parts

Item	Description	Part #
1	Motor	(60747 & 60747-1) 36400
		(60747-2 & 60746) 60638
2	Straight adapter	B6539
3	Check valve - 2 lb.	B5880
4	Elbow 1/8NPT	A2768
5	Thread adapter	B6131
6	Gear pump	25937-1
7	Relief valve	(60747, -1 & -2) B6898
		(60746) B5643
8	Plug	23422
9	Copper washer	20913-3
10	Filter assembly	B5909
11	Filter connector	(60747 & 60747-2) B6963-1
		(60747-1 & 60746) B9635
12	Gasket	B6903-1
13	Screw (x2)	AV15804030
14	Inlet for gear pump	60715



Refer to the following datasheets for available reservoirs:

- + Datasheet #2304:
Reservoir- 1 Gallon
- + Datasheet #2305:
Reservoir- 5 Gallon

BIJUR DELIMON INTERNATIONAL

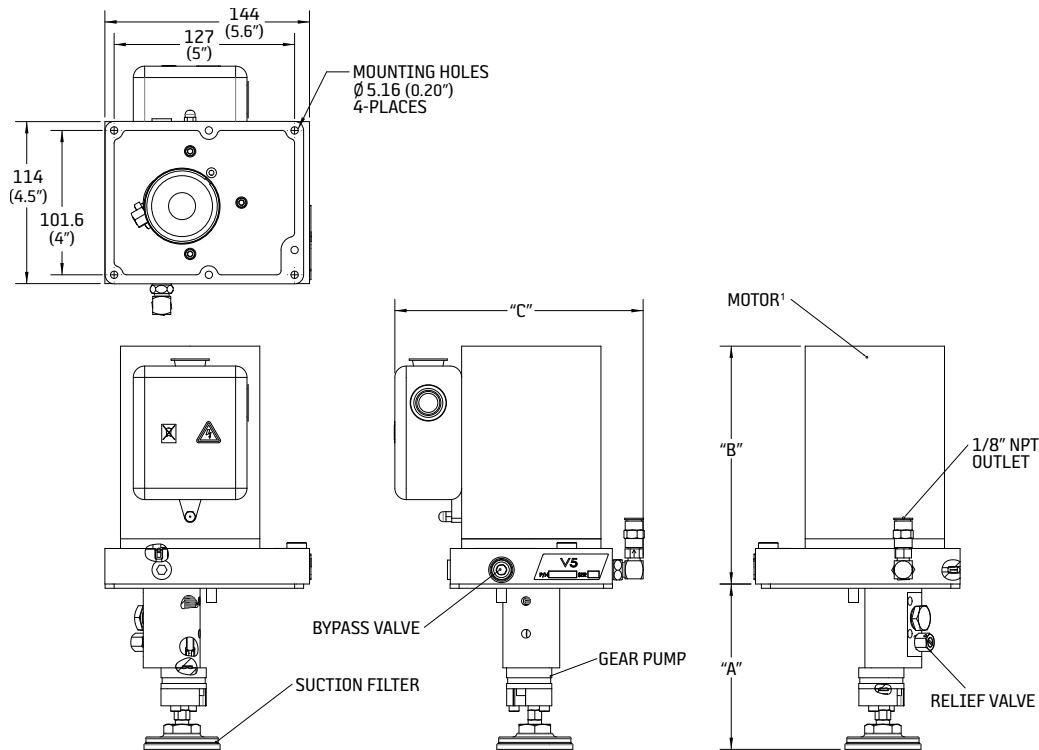
(919) 465 4448 LOCAL
(800) 631 0168 TOLL-FREE
(919) 465 0516 FAX

WWW.BIJURDELIMON.COM

2250 Perimeter Park Dr., Suite 120
Morrisville, NC 27560

Dimensional Schematics

¹ Motor shape is Bijur Delimon's option.



Part #	A	B	C
60747	117mm (4.6")	167mm (6.5")	175mm (6.8")
60747-1	322mm (12.6")	167mm (6.5")	175mm (6.8")
60747-2	117mm (4.6")	178mm (7")	169mm (6.6")
60746	322mm (12.6")	178mm (7")	169mm (6.6")

BIJUR DELIMON INTERNATIONAL

(919) 465 4448 LOCAL
(800) 631 0168 TOLL-FREE
(919) 465 0516 FAX

WWW.BIJURDELIMON.COM

2250 Perimeter Park Dr., Suite 120
Morrisville, NC 27560

Startup Instructions

1. Fill reservoir with oil.
2. Start machine and see that oil flows at all bearings.

Maintenance

Check oil level daily and refill reservoir when required. Check the system periodically for loose or broken tubing, worn hoses, loose fittings and connections. Replace filter group annually.

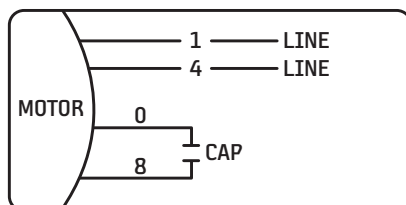
Filter Replacement

An inlet filter provides primary protection of the lubricating system. The filter should be inspected every six months. If not clean, replace.

Motor Replacement

1. Disconnect the electrical supply from the motor, disconnect system tubing and remove lubricator unit from the oil reservoir.
2. Turn the lubricator unit upside down and remove the filter inlet connector rod / filter from the pump by turning the hex of the filter carefully in a counter-clockwise direction. Also remove the inlet gear pump adaptor and O ring that connect the inlet filter rod to the gear pump.
3. Remove the two M4 SHC screws holding the gear pump to the downspout and remove the gear pump. Remove the three #8-32 socket cap screws holding the downspout onto the motor and lift the downspout clear from the motor.
4. Replace the motor and carefully re-assemble the motor driveshaft / motor coupling onto the new motor shaft. The motor coupling must be equally spaced between the motor driveshaft and the motor shaft.
5. Re- assemble the downspout onto the motor by carefully lining up the three holes and inserting and tightening the three #8-32 socket cap screws.
6. Re-assemble the gear pump to the downspout, ensuring that the shaft of the gear pump meshes with the motor driveshaft. Place the inlet gear pump adaptor and O ring onto the gear pump and then insert the two M4 SHC screws to hold in place.
7. Re-assemble the filter inlet connector rod / filter into the gear pump adaptor.

Motor Wiring - 115vac Single Phase



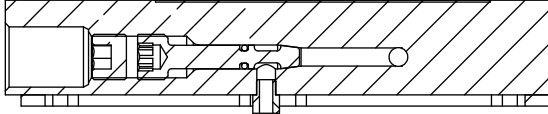
BIJUR DELIMON INTERNATIONAL

(919) 465 4448 LOCAL
(800) 631 0168 TOLL-FREE
(919) 465 0516 FAX

WWW.BIJURDELIMON.COM

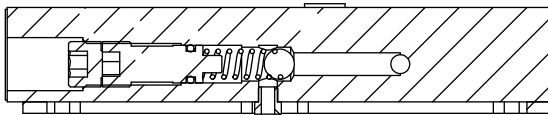
2250 Perimeter Park Dr., Suite 120
Morrisville, NC 27560

Bypass Adjustments



Constant Volume - Flow Bypass

Lubricator is pre-set with by-pass valve closed for maximum discharge. To adjust the flow in the system remove the locking plug from the front of the pump using a 1/4 " hex key. Adjust the screw in a clock-wise direction to increase the flow again using a 1/4" hex key or counter-clockwise to decrease the flow. Insert and tighten the locking plug after adjustment.



Constant Pressure - Pressure Bypass

Lubricator is pre-set with by-pass valve closed for maximum pressure. To adjust the pressure in the system remove the locking plug from the front of the pump using a 1/4 " hex key. Adjust the screw in a clock-wise direction to increase the pressure again using a 1/4" hex key or counter-clockwise to decrease the pressure. Insert and tighten the locking plug after adjustment.

BIJUR DELIMON INTERNATIONAL

(919) 465 4448 LOCAL
(800) 631 0168 TOLL-FREE
(919) 465 0516 FAX

WWW.BIJURDELIMON.COM

2250 Perimeter Park Dr., Suite 120
Morrisville, NC 27560